

METER MIX DISPENSING SOLUTIONS

INNOMIX LC 'FIRST ENTRY LEVEL METER MIX SYSTEM'

RELIABLE, ACCURATE AND EASY-MAINTENANCE SOLUTIONS FOR COATING AND DISPENSING



- THE **INNOMIX LC** MODEL IS A BASIC EQUIPMENT FROM THE WIDE RANGE OF TWO-COMPONENT MATERIAL MIXERS AND DOSERS OF THE INNOMIX SERIES, AT A VERY LOW PRICE, FOR ALL THOSE CUSTOMERS WHO NEED AN INDUSTRIAL MIXER FOR A PARTICULAR APPLICATION AT A LOW COST.
- THIS EQUIPMENT IS DESIGNED FOR USE IN **ENCAPSULATION, GASKETING, SEALING, POTTING, ETC. APPLICATIONS. OF ELECTRONIC EQUIPMENT** AND, IN DEFINITIVE, ALL TYPES OF APPLICATIONS WHERE IT IS REQUIRED TO MIX TWO COMPONENTS TOGETHER WITH A CONTROL OF THE VOLUME AND SPEED OF DISPENSING.
- EQUIPMENT SUITABLE FOR USE WITH ALL KINDS OF **POLYURETHANES, EPOXYS, SILICONES, METHACRYLATES, PAINTS, ETC.**
- THE EQUIPMENT IS IDEAL FOR BI-COMPONENT APPLICATIONS OF MEDIUM AND LOW VISCOSITY, AND IS PRESENTED AS A VERY ECONOMIC ALTERNATIVE FOR APPLICATIONS IN WHICH MANUAL MIXING WAS THE ONLY SOLUTION (WITH THE INCONVENIENCES THAT THIS TYPE OF WORKING SYSTEM CAUSES).
- THE SYSTEM CONSISTS OF TWO REINFORCED STEEL CYLINDERS WITH POSITIVE DISPLACEMENT PNEUMATIC ACTIVATION, AND ALLOWS US TO PRE-ADJUST MIX RATIOS FROM **100:100 TO 100:5** (FIXED FACTORY SETTING), WITH A MAXIMUM VISCOSITY OF **800,000 CPS**. THE MATERIALS FLOW FROM THE TANKS IS CONTROLLED WITH A MECHANICAL LIMITER.
- THE VOLUME OF MATERIAL DISPENSED IN EACH SHOT IS ADJUSTABLE BETWEEN **1 ML AND 110 ML** FOR A **1:1 MIXING RATIO**. (ASK FOR OTHER RATIO VOLUMES), HAVING A MAXIMUM SHOOTING FREQUENCY OF 50 SHOT PER MINUTE (DEPENDING ON THE VISCOSITY OF THE MATERIAL).
- THE MIXING SYSTEM IS CARRIED OUT THROUGH A STATIC MIXER SUPPORTED BY A FIXED POSITION VALVE.
- INTERIOR MADE WITH STAINLESS STEEL AND ALUMINUM FOR EASY CLEANING AND GOOD PROTECTION AGAINST SOLVENTS AND AGGRESSIVE LIQUIDS.
- THE SYSTEM ALLOWS YOU TO ADJUST THE QUANTITY OF MATERIAL DISPENSED PER SHOT WITH A PRECISION SCREW. IT ALSO ALLOWS THE DOSING SPEED TO BE ADJUSTED THROUGH A PRESSURE REGULATOR.
- **OPTIONAL** HEATING SYSTEM FOR TANKS OF 10 AND 30 LITER. FLEXIBLE BLANKET WITH TEMPERATURE REGULATION AMB-90° C.
- **OPTIONAL** ADJUSTABLE PNEUMATIC AGITATOR IN TANKS TO AVOID SEDIMENTATION OF MINERAL CHARGES IN POLYURETHANES, EPOXY AND SILICONE.
- **OPTIONAL** AUTOMATIC SHOOTING SYSTEM. IT INCLUDES AN EXTERNAL PANEL WITH A CONTROLLER THAT ALLOWS YOU TO CONFIGURE THE NUMBER OF SHOTS FOR EACH PRESSING OF THE BUTTON OR PEDAL.
- **OPTIONAL** LOW LEVEL CONTROL SYSTEM IN TANKS BY MEANS OF PROGRAMMABLE DIGITAL SCALE.

INNOMIX LC SERIES VIDEO <https://youtu.be/UHz32aKDZl4>

APPS BICOMP INNOMIX SERIES VIDEO <https://youtu.be/tak2tQuQANo>

MATERIALS: CONFORMAL COATINGS, ACRYLICS, URETHANES, SILICONES, RTV, BI-COMPONENT MATERIALS, ETC.

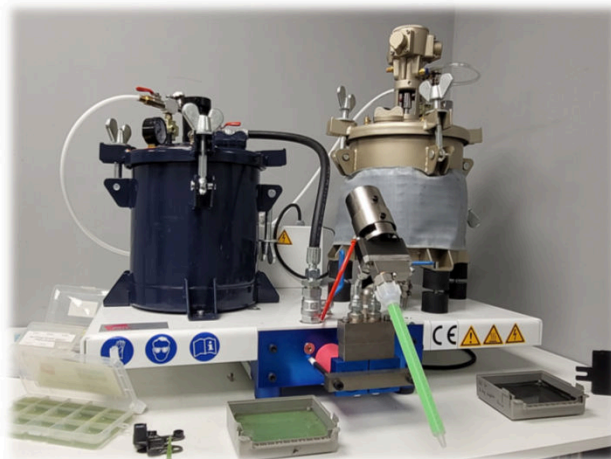


INNOMIX LC MODELS

INNOMIX LC VERSIONS

DEPENDING ON THE PRODUCTION NEEDS AND MIXING RATIO OF THE MATERIAL TO BE USED, WE HAVE 4 DIFFERENT MODELS:

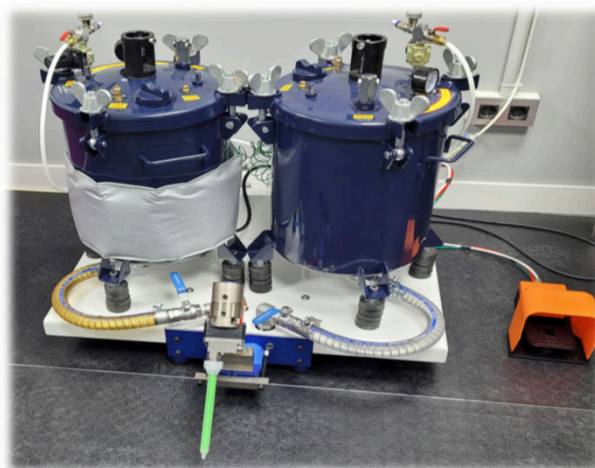
- INNOMIX LC20 (TANK PART A 10 LITERS, TANK PART B 10 LITERS)
- INNOMIX LC40 (TANK PART A 30 LITERS, TANK PART B 10 LITERS)
- INNOMIX LC60 (TANK PART A 30 LITERS, TANK PART B 30 LITERS)
- INNOMIX LCP (PISTON PUMP FOR PART A, PART B O BOTH)



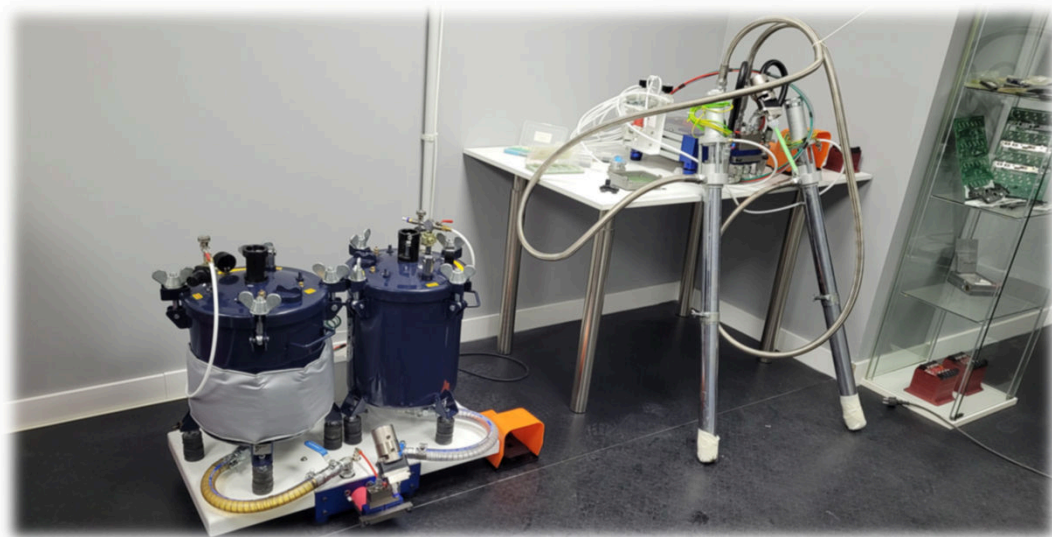
INNOMIX LC20 WITH AGITATOR AND HEATING SYSTEM IN PART A



INNOMIX LCP WITH TWO PISTON PUMPS FOR 200 KG DRUM



INNOMIX LC60 INNOMIX LC20 WITH AGITATOR AND HEATING SYSTEM IN PART A



MATERIALS: CONFORMAL COATINGS, ACRYLICS, URETHANES, SILICONES, RTV, BI-COMPONENT MATERIALS, ETC.

PNEUMATIC AGITATOR (OPTIONAL)

WHEN THE BASE MATERIAL (OR CATALYST IN SOME CASES) HAS DECANTING CHARGES, IT IS NECESSARY TO PUT AN AGITATOR THAT MIXES THE MATERIAL AT A SLOW AND CONSTANT SPEED TO AVOID FILLER FALL DOWN TO THE BOTTOM.

THE AGITATOR ALLOWS TO ADJUST THE AIR FLOW, THUS BEING ABLE TO ADJUST THE SPEED OF ROTATION ACCORDING TO THE VISCOSITY OF THE MATERIAL.

WHEN IT IS AGITED, IT IS RECOMMENDED TO ALSO INSTALL A VACUUM OR DEGASIFICATION SYSTEM.

HEATED JACKET (OPTIONAL)

ALLOWS TO MAINTAIN THE MATERIAL AT THE SET TEMPERATURE (AMBIENT – 90°C) THROUGH A FLEXIBLE JACKET WITH ADJUSTABLE TEMPERATURE WITH A THERMOSTAT.

THE FACT OF HEATING THE MATERIAL ALLOWS TO LOWER THE VISCOSITY, WHICH WILL ALLOW US, ON THE ONE HAND, TO MIX BOTH PARTS IN A MORE EVEN WAY, AND ON THE OTHER, TO ALLOW A BETTER FLUIDITY WHEN APPLYING IT.

BY HEATING THE BASE MATERIAL, IN MOST CASES IT ALSO ALLOWS TO SHORTEN ITS POLYMERIZATION TIMES, ONCE IT IS MIXED.



30 LITER STAINLESS STEEL TANK WITH HEATED



STAINLESS STEEL 10 LITER TANK WITH PNEUMATIC AGITATOR AND HEATING JACKET

AUTOMATIC SHOOTING SYSTEM (OPTIONAL)

AS OPTION AN AUTOMATIC SHOOTING SYSTEM IS AVAILABLE, WHICH ALLOWS US TO AUTOMATE THE NUMBER OF SHOOTINGS TO FILLING PIECES THAT REQUIRE SEVERAL SHOOTINGS OF MATERIAL BY YOU AND SO BE ABLE TO PERFORM OTHER WORK WHILE THE TEAM PERFORMS THE MIXING AND FILLING.

THE SYSTEM ALLOWS TO ADJUST THE VOLUME OF EACH SHOT THROUGH A LIMIT SWITCH SENSOR. WE CAN ALSO ADJUST THE NUMBER OF SHOTS THAT WILL BE CARRIED OUT AUTOMATICALLY.



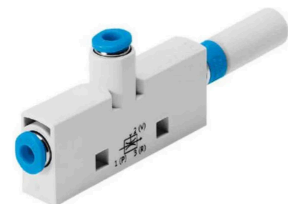
THE PANEL HAS AN EMERGENCY STOP BUTTON FOR SAFETY.



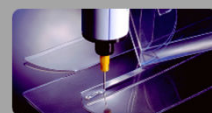
AUTOMATIC SHOOTING MODULE

VENTURY DEGASIFIER (OPTIONAL)

IT ALLOWS US TO MAKE A VACUUM PROCESS IN THE TANKS DURING THE TIME NECESSARY TO BE ABLE TO ENSURE THE ELIMINATION OF THE BUBBLES GENERATED IN THE LOADING OF THE TANK OR IN THE AGITATING PROCESS, EITHER BY EXTERNAL MEANS, OR BY USE OF THE PNEUMATIC AGITATOR.



MATERIALS: CONFORMAL COATINGS, ACRYLICS, URETHANES, SILICONES, RTV, BI-COMPONENT MATERIALS, ETC.



INNOMIX LC SERIES ESPECIFICACIONES

CARACTERÍSTICAS GENERALES INCLUIDAS

MODELOS:

- INNOMIX LC20 INCLUDES 10 LITERS TANK FOR PART A AND 10 LITERS TANK FOR PART B
- INNOMIX LC40 INCLUDES 30 LITERS TANK FOR PART A AND 10 LITERS TANK FOR PART B
- INNOMIX LC60 INCLUDES 30 LITERS TANK FOR PART A AND 30 LITERS TANK FOR PART B
- INNOMIX LCP INCLUDES DIAPHRAGM PUMP FOR PART A AND/OR PART B

PUMPS

- PART A: POSITIVE DISPLACEMENT PRECISION VOLUMETRIC PUMP
- PART B: POSITIVE DISPLACEMENT PRECISION VOLUMETRIC PUMP
- BOTH PUMPS MADE OF REINFORCED STEEL FOR ABRASIVES

VISCOSITY RANGE

- 0 – 600.000 CPS

VOLUMEN PER SHOT

- ADJUSTABLE BETWEEN 1 TO 110 ML FOR A 1:1 RATIO
ASK VOLUMES FOR OTHER RATIOS

CONTROLS

- PNEUMATIC SHOOTING PEDAL INCLUDED
- SPEED REGULATOR (DISPENSE FLOW)
- VOLUME REGULATOR PER SHOT

ACCESSORIES INCLUDED

- STATIC MIXERS
- STEEL *LINER* FOR TANK (MAINLY FOR HARDENER)
- NEEDLE KIT WITH DIFFERENT GAUGES
- STATIC MIXER LUER LOCK ADAPTER FOR NEEDLES

POWER SUPPLY

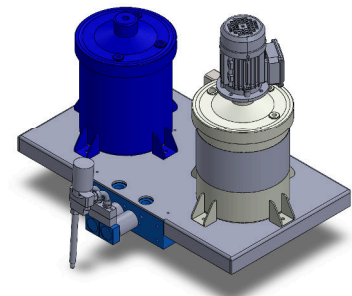
- 110/230V 1 PHSE. 10A MAX (ONLY WITH HEATING TANK JACKET)

PNEUMATIC AIR

- AIR SUPPLY 5.5 BARS / 80 PSI – 10 BARS / 145 PSI (MIN AND MAX)

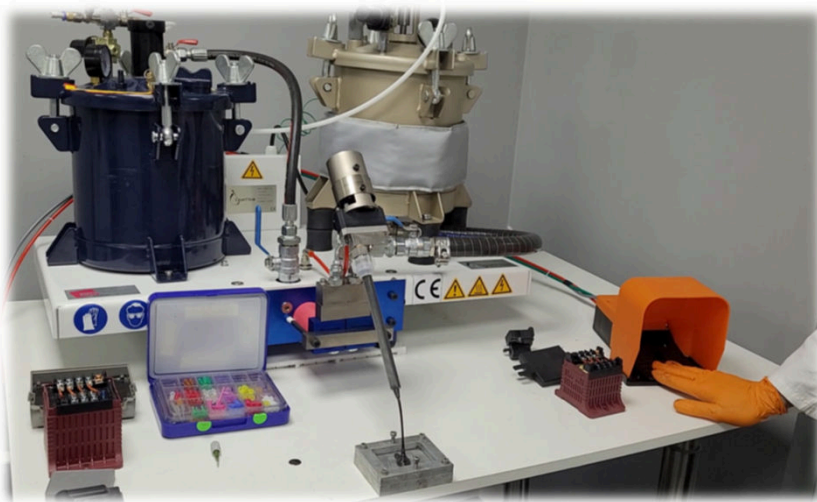
CERTIFICATION

- CE

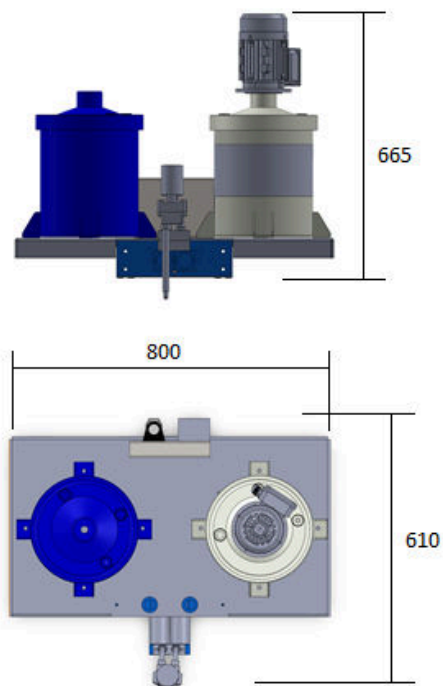


EQUIPAMIENTO OPCIONAL

- 10 AND 30 LITER STAINLESS STEEL TANKS
- REGULABLE PNEUMATIC AGITADOR
- REGULABLE HEATING JACKET FOR 10 AND 30 LITER TANKS
- VENTURY DEGASIFIER
- LOW LEVEL SENSOR (SCALE TYPE)
- AUTOMATIC SHOOTING SYSTEM
- INNOMIX SCV SERIES
- IR CURING OVENS
- UV CURING OVENS
- BENCHTOP AND IN-LINE DISPENSING AND CONFORMAL COATING ROBOTS



INNOMIX LC DIMENSIONS



INSTALLATION REQUERIMENTS

HEAVY TABLE WITH 1000X800 MM) MIN.

WEIGHT EQUIPMENT (WITH EMPTY TANKS):

MODEL INNOMIX LC20 70 KG

MODEL INNOMIX LC40 90 KG

MODEL INNOMIX LC60 110 KG

MODEL INNOMIX LCP 40 KG

SUMINISTRO AIRE NEUMÁTICO LIBRE DE HUMEDAD Y ACEITE.

PNEUMATIC AIR SUPPLY NEEDS TO BE DRY AND WITH NO DUST, OIL, ETC.

AIR SUPPLY 5.5 BARS / 80 PSI – 10 BARS / 145 PSI (MIN AND MAX)

ELECTRIC POWER 110/230V 10A MAX. 50-60 HZ. (ONLY FOR HEATED JACKET)

MEASURES IN CM

INTERNATIONAL SALES DEPARTMENT

TEL. +34 925 258 073

FAX +34 925 581 457

coatflow@coatflow.com

www.coatflow.com

www.innomelt.com

LOCAL DISTRIBUTOR

OTHER COATFLOW SOLUTIONS

